

D-Link Quick Installation Guide

Web-based Configuration will require a current web browser, i.e., Internet Explorer 5.x, Netscape Navigator 4.x.



DWL-810
D-Link Air™
Ethernet-to-Wireless Bridge

Before You Begin

You must have at least the following:

An Ethernet-enabled device, such as a game console, laptop or desktop computer, network printer or set-top box that will connect to the DWL-810

Check Your Package Contents

These are the items included with your DWL-810 purchase:



- DWL-810 Ethernet-to-Wireless Bridge



- CD-ROM (containing Manual and Warranty)



- Ethernet (CAT5 UTP) Cable



- 5V DC 2.5A Power Adapter



Using a power supply with a different voltage rating will damage this product and void its warranty.

If any of the above items are missing, please contact your reseller.

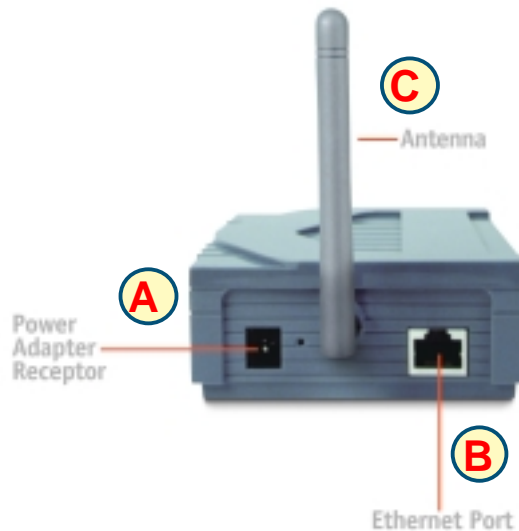
©2002 D-Link Systems, Inc. All rights reserved. Trademarks or registered trademarks are the property of their respective holders. Software and specifications subject to change without notice. DWL-810. 07082002

1

Connecting the DWL-810 Ethernet-to-Wireless Bridge to your Ethernet-enabled device

If you are wirelessly connecting the DWL-810 to an Access Point or Wireless Router on a larger wireless network, additional configuration is required (see

- A. First, connect the power adapter to the **receptor** at the back panel of the DWL-810 and then plug the other end of the power adapter to a wall outlet or power strip. The Power LED will turn **ON** to indicate proper operation.
- B. Insert one end of the Cross-Over Ethernet cable (included) to the Ethernet port on the back panel of the DWL-810 and connect the other end to the Ethernet port located on the device (e.g., a Set Top Box, Gaming Console, laptop or desktop computer, or network printer.) The LED light will illuminate to indicate proper connection.
- C. The antenna is used by the DWL-810 to connect to other 802.11b wireless devices.

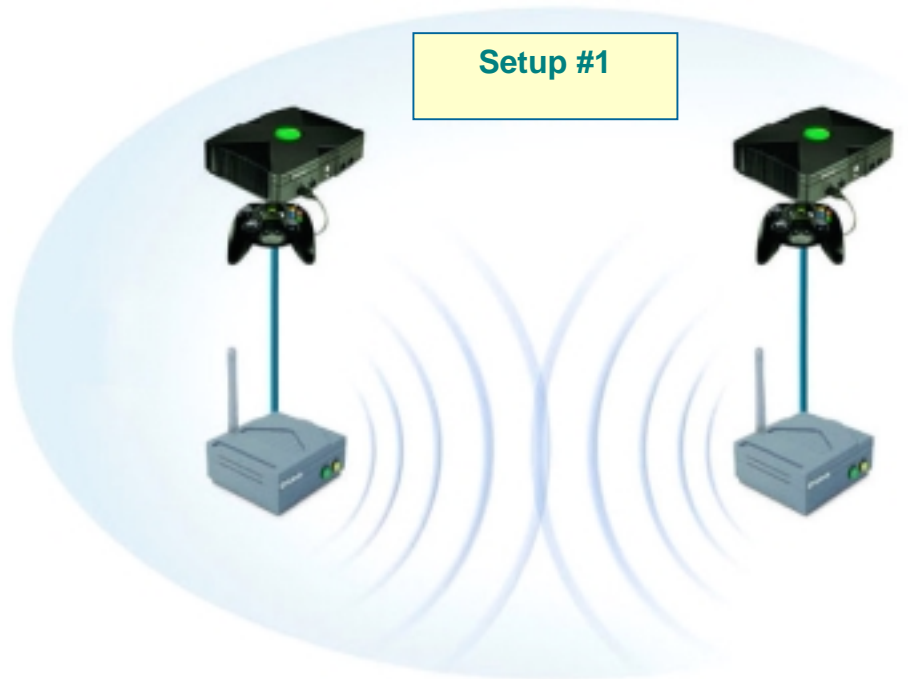


No configuration of the DWL-810 is needed if your setup is similar to Setup #1 (shown on the following page, in Step 2.)

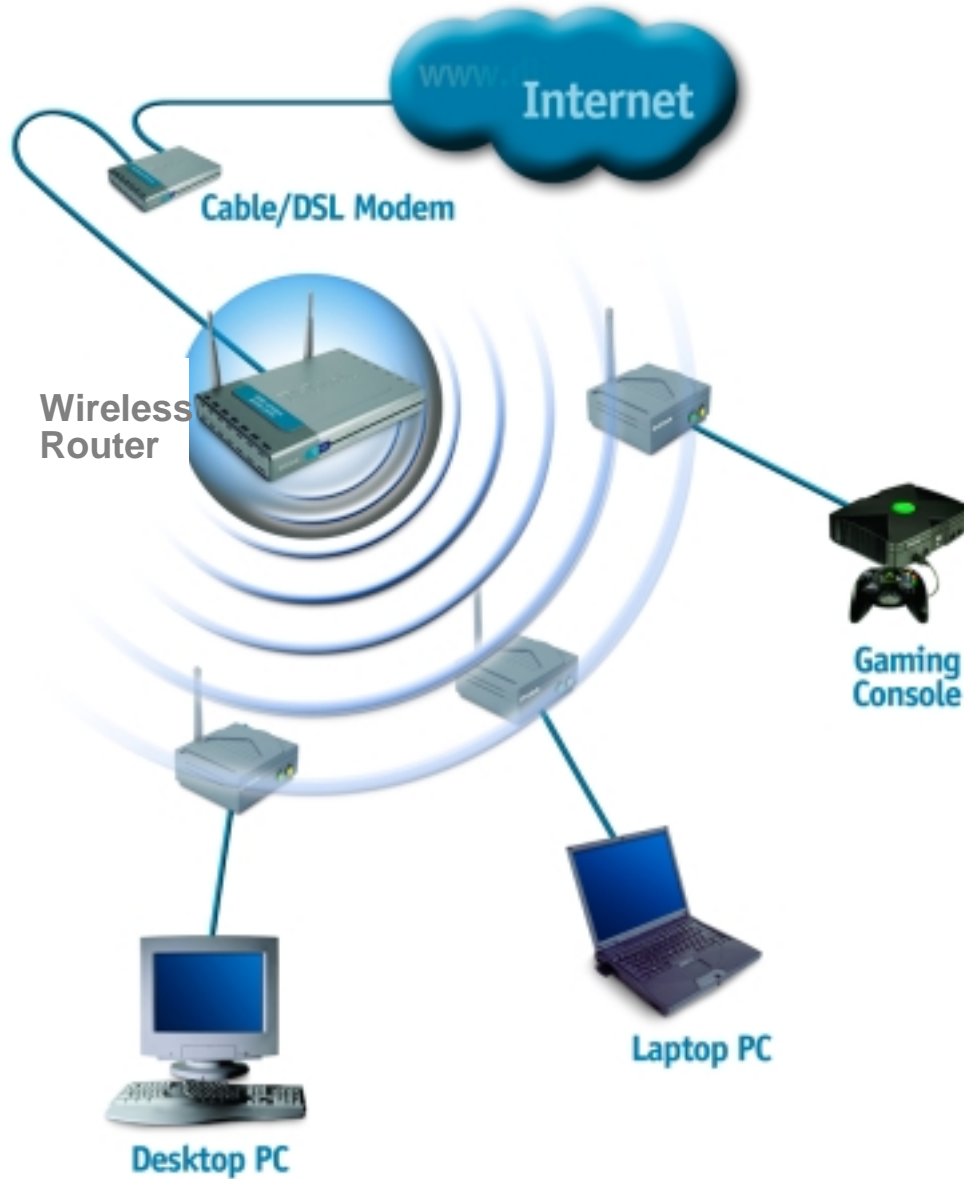
2

How the DWL-810 Ethernet-to-Wireless Bridge Connects to other Wireless Devices

When you have completed the steps in this *Quick Installation Guide*, and you have connected the DWL-810 to your host computer, set top box, or gaming console, you will be able to wirelessly connect to other 802.11b wireless devices to share files, join multiplayer video games or even share your internet connection over the wireless network (Setup #2.)



Setup #2



*If you are connecting in **Setup #2** mode (as shown above), please continue to Step 3 in this guide. If you are connecting in **Setup #1** mode, no further configuration is needed! You are ready to enjoy your connection with the DWL-810 right now!*

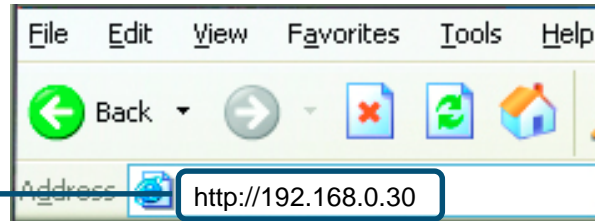
3 Web-based Configuration

If you need to configure the DWL-810, follow the steps below:

Before You Begin the Configuration

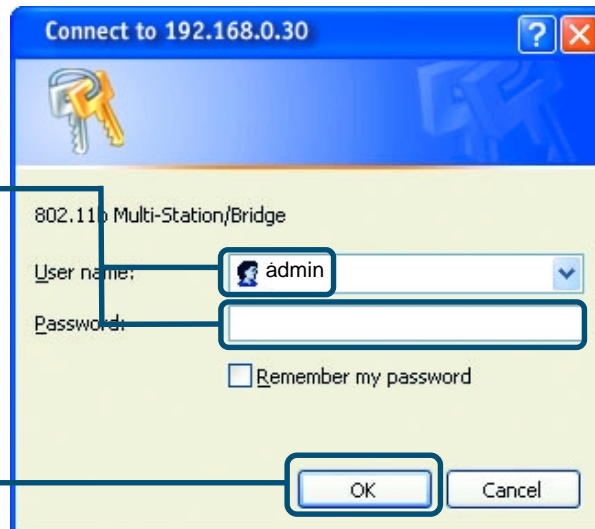
It's best to use a computer (with an Ethernet adapter) that is connected directly to the DWL-810 for configuration. The default IP address for the DWL-810 is **192.168.0.30** with a Subnet Mask of **255.255.255.0**. You will need to assign your computer a Static IP address within the same range as the DWL-810's IP address in order to configure the DWL-810. **See the Appendix in this *Quick Installation Guide* if you need assistance in assigning a Static IP address.**

Open your Web browser and type "**http://192.168.0.30**" into the URL address box. Then press the **Enter** or **Return** key.



The logon pop-up screen will appear.

Type "**admin**" for the username and leave the password field blank.



Click **OK**

The configuration window will open, as shown on the next page.

Configuration

Click **Wireless** in the Configuration menu. This screen will appear.

Select **Infrastructure**

The **default** wireless settings are:
SSID = default
Channel = 6

You can change the SSID and Channel settings to match an existing wireless network.

Click on **Apply**

The screenshot shows the configuration page for the D-Link DWL-810. The 'Wireless' tab is active. The 'Operating Mode' is set to 'Infrastructure'. The SSID is 'default' and the Channel is '6'. The Transmission Rate is 'Automatic (2.4GHz)'. The Access Point Density is 'High'. WEP is disabled. WEP Key Length is '64 bit'. There are four WEP Key fields, all containing '00000000'. The WEP Key To Use is '1'. There are 'Apply' and 'Cancel' buttons at the bottom.



Changes will not take effect until you **reboot** the DWL-810. To **reboot**, click on **Admin** at the top of this screen. In the **Admin** window, click **reboot** to save the changes.

You have completed the Configuration of the DWL-810!

APPENDIX

Assigning a Static IP Address in Windows

To assign a Static IP Address to the laptop or computer that you are using to configure the DWL-810, please do the following:



(The following illustrations show Windows XP with the D-Link DWL-650+ Wireless Cardbus Adapter. Other operating systems and other wireless network adapters will have similar procedures for assigning a Static IP Address.)

If the computer you are using for configuration already has a Static IP Address, be sure to make a note of it. You will need to re-input the original Static IP Address after you configure the DWL-810.

Go to **Start > Double-click on Control Panel > Double-click on Network Connections > Right-click on Local Area Connections > Click Properties**

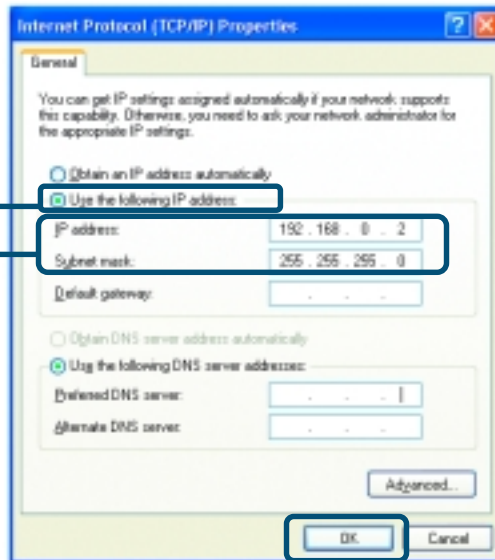
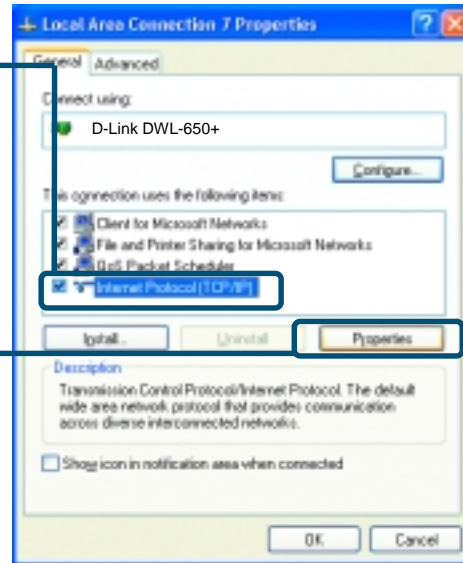
Highlight **Internet Protocol (TCP/IP)**

Click **Properties**

Select **Use the following IP address** in the Internet Protocol (TCP/IP) Properties window

Input your **IP address and subnet mask**. (The IP Address must be within the same range as the DWL-810. The IP Address of the DWL-810 is **192.168.0.30**. You can assign 192.168.0.2 for your laptop. **No two computers can have the same IP Address**. Assign a subnet mask of **255.255.255.0**.)

Click **OK**



You have completed the assignment of the Static IP Address. Please see **Web Configuration** in the manual for more information on the configuration of the DWL-810 when you are installing it in a network, as shown in *Setup #2* in this *Quick Installation Guide*.

Technical Support

You can find the most recent software and user documentation on the D-Link website. **D-Link** provides free technical support for customers within the United States for the duration of the warranty period on this product. U.S. customers can contact D-Link technical support through our web site or by phone.

D-Link Technical Support over the Telephone:

(877) 453-5465

24 hours a day, seven days a week

D-Link Technical Support over the Internet:

<http://support.dlink.com>

email: support@dlink.com

D-Link[®]
Building Networks for People

Federal Communication Commission Interference Statement

This equipment has been tested and found to comply with the limits for a Class B digital device, pursuant to Part 15 of the FCC Rules. These limits are designed to provide reasonable protection against harmful interference in a residential installation. This equipment generates, uses and can radiate radio frequency energy and, if not installed and used in accordance with the instructions, may cause harmful interference to radio communications. However, there is no guarantee that interference will not occur in a particular installation. If this equipment does cause harmful interference to radio or television reception, which can be determined by turning the equipment off and on, the user is encouraged to try to correct the interference by one of the following measures:

- Reorient or relocate the receiving antenna.
- Increase the separation between the equipment and receiver.
- Connect the equipment into an outlet on a circuit different from that to which the receiver is connected.
- Consult the dealer or an experienced radio/TV technician for help.

FCC Caution: To assure continued compliance, (example - use only shielded interface cables when connecting to computer or peripheral devices) any changes or modifications not expressly approved by the party responsible for compliance could void the user's authority to operate this equipment.

This device complies with Part 15 of the FCC Rules. Operation is subject to the following two conditions: (1) This device may not cause harmful interference, and (2) this device must accept any interference received, including interference that may cause undesired operation.

IMPORTANT NOTE:

FCC Radiation Exposure Statement:

This equipment complies with FCC radiation exposure limits set forth for an uncontrolled environment. This equipment should be installed and operated with minimum distance 20cm between the radiator & your body.

This transmitter must not be co-located or operating in conjunction with any other antenna or transmitter.